

# The Inova Advanced Imaging Center

## A Service of Inova Fair Oaks Hospital

The Inova Advanced Imaging Center brings together convenient, personalized care and state-of-the-art diagnostics to deliver an exceptional patient experience. With the most advanced technology available, the center is dedicated to providing physicians and patients with the highest quality imaging to make confident healthcare decisions.

### World Class, Compassionate Care

Personalized and compassionate care – that is what patients can expect at the new imaging center. From the spa-like atmosphere to warm blankets and classical music, our center was designed with the patient in mind. In addition to comfort, the center provides licensed and experienced imaging professionals. The center boasts fellowship trained radiologists specializing in musculoskeletal, neurological and body imaging.

### Convenience

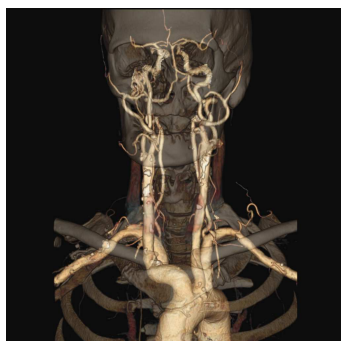
Scheduling an appointment at the Inova Advanced Imaging Center is seamless and easy. Patients have the option of scheduling an appointment in-person, on-line, or by phone through our centralized scheduling line. Evening, weekend, and stat/same-day appointments are also available for your convenience. The center accepts most insurance plans and there is an experienced financial counselor onsite to help patients with payment arrangements, if needed.

As a physician, you can expect to see test results within 24 hours and frequently same day. A radiologist is onsite daily and available for consult at your request.

### The Latest Technology

**3T High Definition MRI Scanner:** GE's newest scanner featuring special orthopedic imaging with T2 color cartilage joint mapping and advanced gradient imaging for orthopedic work.

- An accurate, more complete scan, with superior image quality to make confident decisions
- Landscape window with an expansive view through the 3T tunnel to minimize patient anxiety
- Detailed scans allow for evaluation of joint pathology without use of intra-articular contrast



**64 Slice, Low-dose CT Scanner:** With up to 50% lower radiation exposure — and with high-definition image quality across all anatomies—the scanner can reach any part of the body, any age patient, and across applications that demand the leading edge of low dose CT.

**Philips Radiographic Room:** Featuring digital technology, this room is the first of its kind to be set up for routine x-rays as well as special features for scoliosis and weight bearing studies.

**3620 Joseph Siewick Drive  
Suite 105  
Fairfax, VA 22033**