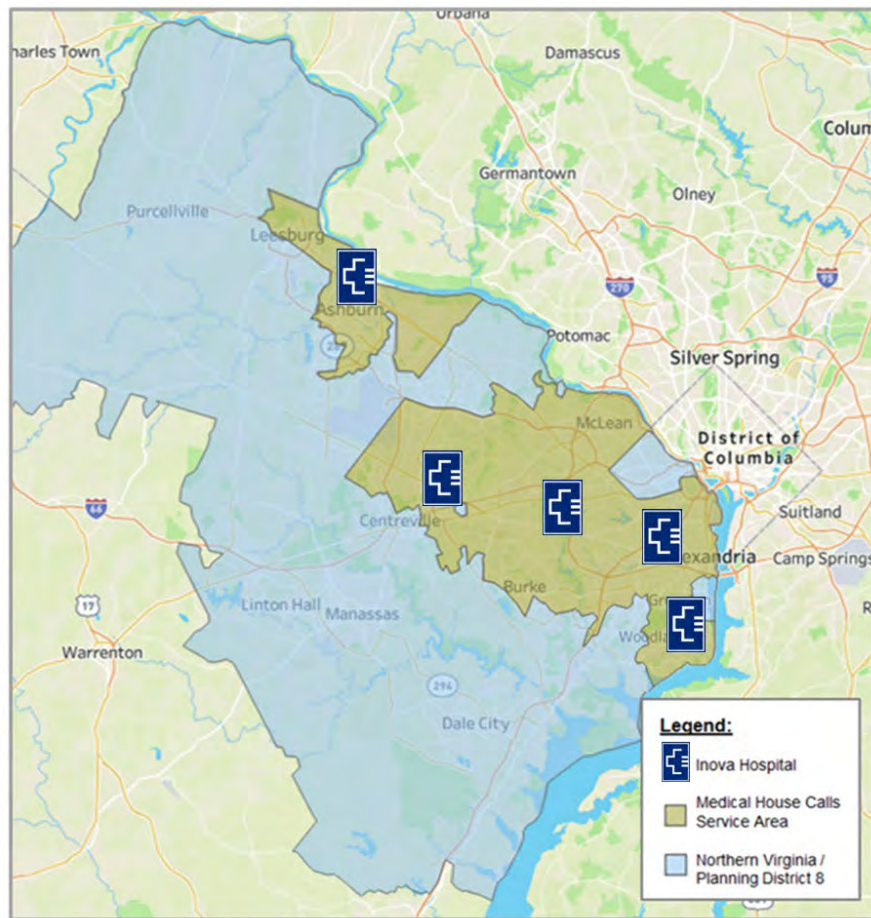


Inova Geriatrics/Medical House Calls Coverage Areas



Covered Zip Codes					
20147	22009	22040	22124	22204	22308
20151	22015*	22041	22150*	22206	22309
20164	22027	22042	22151	22211	22310
20165	22030*	22043	22152	22301	22311
20166*	22031	22044	22180	22302	22312
20171	22032	22046	22181	22303	22314
20176*	22033	22101	22182	22304	
20191	22034	22102	22183	22305	
22003	22038	22116	22202	22306	

Coverage Limitations
*20166 - We see patients east of Route 28.
*20176 - We see patients south of Whites Ferry Rd.
*22015 - We see patients north of the Fairfax County Pkwy.
*22030 - We see patients East of Fairfax County Pkwy.
*22150 - We see patients North of Fairfax County Pkwy, North of Franconia-Springfield Pkwy, and North of Manchester and North of South Van Dorn and West of 611.